

### Dorsal Penile nerve Block

The penis may be imaged in short axis through the base towards the pubic symphysis. The dorsal nerve block fills the space deep to Scarpa's fascia and posterior to the penis with local anaesthetic. The tip of a needle may be seen making an across plane approach to the beam and positioned immediately posterior to the base of the penis.

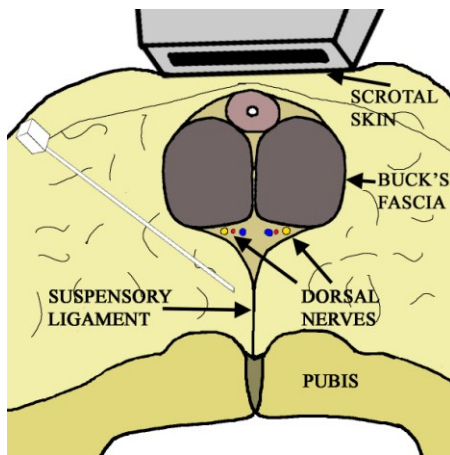


Fig 4.30 diagram of anatomy of penile nerve block using short axis orientation of probe

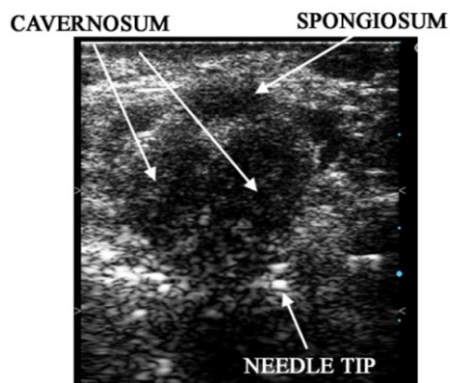


Fig 4.31 sonogram from the base of the penis (short axis) dorsal nerve block across plane approach

The penis may also be blocked using the probe longitudinal to the shaft in the area inferior to the pubic bone. A longitudinal image of the base of the penis is obtained and the needle introduced either side checking that the local anaesthetic is

deposited deep to the fascia and either side of the suspensory ligament.

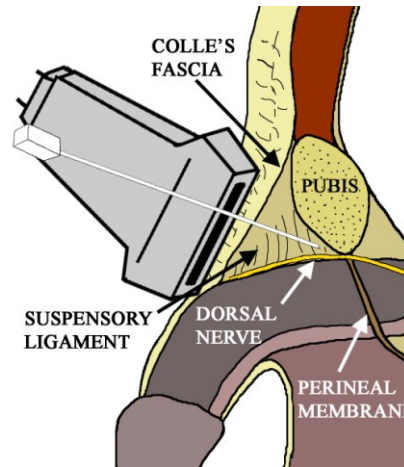


Fig 4.31 alternative needle and probe orientation for penile nerve block.

In describing this ultrasound guided procedure it has been assumed that attention has been paid to appropriate location, personnel, sterility, preparation, doses and technique necessary for the safe conduct of major nerve blocks and other procedures. These medical procedures should not be attempted without suitable qualifications

### Acknowledgements

Thanks go to the Ecole Polytechnique Federale de Lausanne for the excellent anatomical slices that can be obtained from the data set of the Visible Human Project via their website at <http://visiblehuman.epfl.ch/>